

GALVESTON COUNTY COOPERATIVE EVACUATION PLAN

APPROVAL & IMPLEMENTATION
The County of Galveston
Cooperative Evacuation Plan

This emergency management plan is hereby approved. This plan is effective immediately and supersedes all previous editions.

COUNTY JUDGE

DATE

MAYOR, BAYOU VISTA

DATE

MAYOR, CLEAR LAKE SHORES

DATE

MAYOR, DICKINSON

DATE

MAYOR, FRIENDSWOOD

DATE

MAYOR, GALVESTON

DATE

MAYOR, HITCHCOCK

DATE

MAYOR, JAMAICA BEACH

DATE

MAYOR, KEMAH

DATE

MAYOR, LA MARQUE

DATE

MAYOR, LEAGUE CITY

DATE

MAYOR, SANTA FE

DATE

MAYOR, TEXAS CITY

DATE

MAYOR, TIKI ISLAND

DATE

RECORD OF CHANGES

GALVESTON COUNTY COOPERATIVE EVACUATION PLAN

CHANGE #	DATE OF CHANGE	CHANGE ENTERED BY	DATE ENTERED

GALVESTON COUNTY COOPERATIVE EVACUATION PLAN

I. PURPOSE

The purpose of this plan is to guide the safe and orderly evacuation of Galveston County prior to an approaching hurricane. For the purposes of this plan the following terms will apply:

- A. **Capital Area Shelter Hub Plan:** The plan which describes how the City of Austin, Travis County and surrounding counties will accommodate evacuees, including those with medical and functional needs, who have been evacuated from Galveston County as a result of a mandatory evacuation.
- B. **Decision-maker:** The mayor of each City and the County Judge, each of whom has the authority to recommend evacuation or call a mandatory evacuation of his/her jurisdiction. Each jurisdiction must have the name of a decision-maker and an alternate on file with the Galveston County Office of Emergency Management.
- C. **Disaster District Committee:** A regional organization of state agencies chaired by a ranking Department of Public Safety officer ("Disaster District Chairman") to which requests for assistance and situational data from that region's Cities and Counties may be transmitted.
- D. **Point-to-Point Shelter Plan:** A plan developed between a coastal area and a host inland City or County to provide shelter accommodations for evacuees involved in mass transport operations.
- E. **Reception Center:** A designated location where evacuees are received by a host community. Upon arrival they are triaged, registered, and assigned a shelter within the hub region.
- F. **Regional Liaison Officer:** The Texas Division of Emergency Management representative serving the Texas Division of Emergency Management Disaster District Sub 2A, which encompasses Galveston and Brazoria counties.
- G. **Multi-Agency Coordinating Committee:** The group comprised of the mayor of Houston, the mayor of Galveston, and the County judges of the 13-County Houston-Galveston Area Council region, or their appointees, responsible for coordinating evacuations and responding to catastrophic events. Also referred to under the National Incident Management System as the Multi-Agency Coordinating Group.
- H. **State Operations Center:** The emergency operations center within the Texas Department of Public Safety/Division of Emergency Management facility in Austin from which state coordination of disaster operations occurs.

II. SITUATION

Galveston County lies on the Upper Texas Gulf Coast and from time to time must evacuate some or all of its residents to protect them from dangerous winds, accumulated rainfall, and storm surge associated with hurricanes. The Texas

Legislature gave mayors and County judges the authority to order mandatory evacuations in 2005.

Though the Galveston County Cooperative Emergency Management Program has enabled City and County decision-makers to effectively evacuate the County on numerous occasions, the traffic jams, fuel shortages and deaths related to the evacuation of the Houston-Galveston region as Hurricane Rita approached in September 2005 exposed numerous problems.

In an attempt to address these problems, the Texas Governor's Office mandated in March 2006 the creation of regional organizations across the state to provide coordination for catastrophic events, including hurricanes (*RP-57*). The organization representing the Houston-Galveston area, referred to as the Multi-Agency Coordinating Committee or Group, includes a representative from each of the 13 counties in the Houston-Galveston Area Council region, plus one representative each from the Cities of Houston and Galveston.

The State of Texas also developed a new contra-flow plan (reverse-laning of traffic), fuel surge plan and shelter plans as a result of the lessons learned from Hurricane Rita.

This Cooperative Evacuation Plan incorporates these and other changes spelled out in the State of Texas Hurricane Evacuation and Mass Care Plan issued on June 1, 2006, as amended. Copies of the state plan can be found on the Texas Division of Emergency Management web site. Specific procedures enacted by the Cities and County as they relate to evacuation of functional/medical needs populations are explained in Attachment A.

III. ASSUMPTIONS

When a hurricane threatens to strike the Upper Texas Gulf Coast, Galveston County's decision-makers will meet or participate in conference calls to discuss appropriate actions to protect lives and property.

Evacuation decisions for most hurricanes approaching the Houston-Galveston area will be coordinated with the Multi-Agency Coordinating Committee according to the procedures spelled out in Attachment B.

Priority will be given to evacuating the following low-lying areas of Galveston County: Bayou Vista-Omega Bay, San Leon-Bacliff, Kemah-Clear Lake Shores, Tiki Island, West Galveston Island including Jamaica Beach, and all of the Bolivar Peninsula. Due to ferry access and other issues, the peninsula may be asked to evacuate well in advance of other areas of the county.

Preparations for an approaching hurricane will be made as if they are one category stronger than projected by the National Weather Service.

The American Red Cross will not open shelters in the County before or during a hurricane event. Shelters may be opened as soon as feasible following the storm.

Each jurisdiction will educate its residents, including medical/functional-needs populations, regarding their individual responsibilities when an evacuation is recommended or mandated.

Each jurisdiction will be responsible for maintaining a list of medical/functional needs residents within their geographic area, and for notifying them of potential emergencies as well as coordinating any transportation needs.

IV. EVACUATION FROM ZIP CODE ZONES

Jurisdictions in the Houston-Galveston-Brazoria Study Area adopted a Zip Code Evacuation Plan for the 2007 Hurricane Season to replace the old surge zone maps. The plan calls for evacuation of Galveston County for major hurricanes by groups of zip code zones, beginning with the coast and moving inland. In subsequent years, Chambers and Matagorda counties were added to the map. See Attachment C for a depiction of these zones.

The zip zones generally follow the Evacuation Study Area surge zones and are identified as “**Zip Zone Coastal**” (Island, Bolivar Peninsula, and coastal Brazoria and Matagorda counties), “**Zip Zone A**” (all of the Galveston County mainland except for portions of Friendswood and Santa Fe, and southern Chambers County), “**Zip Zone B**” (portions of Friendswood and Santa Fe, and large portions of Brazoria, Chambers and Matagorda counties), and “**Zip Zone C**” (Southeast Houston and Harris County, and northern Brazoria County).

Evacuation of Galveston County will be conducted with the assistance of local, regional and state law enforcement, as outlined in the Texas Department of Public Safety’s Traffic Management Plan. The latest version is available on the Texas DPS-DEM web site.

V. PRIMARY EVACUATION ROUTES

- A. Interstate 45
- B. Highway 146
- C. Highway 6
- D. Highway 124

The primary evacuation routes for Galveston County are Interstate 45, Highway 146, Highway 6 and Highway 124. Galveston Island and mainland

Galveston County residents should use I-45, Hwy. 146 and Hwy. 6 to evacuate the area. Residents of Bolivar Peninsula should evacuate via Highway 87 to Highway 124 through Chambers County.

Highways and bridges may not be safe in winds that exceed tropical storm intensity (39 mph) and when heavy rainfall persists. Additionally, the Texas Department of Transportation ferry service between Bolivar Peninsula and Galveston will cease operations when tides reach 4.5 feet above normal.

Traffic along various evacuation routes will not be controlled, with the exception of Hwy. 146, where traffic may be diverted to Spur 330 just north of the Fred Hartmann Bridge. From Spur 330 motorists will be allowed to proceed to other routes, including Interstate 10 West, Beltway 8, I-45, etc. This diversion may depend on overall traffic patterns and the direction of the land-falling storm. Traffic may still be diverted for everyday reasons, such as accidents or construction.

The State of Texas will provide wrecker assistance and comfort stations with emergency food, ice and fuel along I-45, I-10, U.S. 290, and Highway 59. These services may not be available to evacuees who choose routes other than the primary evacuation routes, such as Farm-to-Market roads.

The state will “contra-flow” or reverse-flow, as conditions warrant, Interstate 10 west of Brookshire, Interstate 45 north of FM 1488 in Conroe, U.S. 290 west of FM 1960 in Houston, and Highway 59 north between Humble and Cleveland, to facilitate evacuation of the Houston region. Contra-flow typically will be implemented by Houston and Galveston authorities with the input of the MACC/MACG and the State Operations Center. The state plans to implement contra-flow no later than H-36 when a major storm is threatening.

VI. GENERAL EVACUATION STRATEGY

Tropical weather activities are monitored by the Houston-Galveston forecast office of the National Weather Service. The NWS will be the primary source of weather information and interpretation for Galveston County’s decision-makers.

The NWS will continuously update local officials on weather conditions. Any perceived weather threat will be brought to the attention of the Galveston County Office of Emergency Management (GCOEM) for further action, if any.

When a hurricane approaches the Upper Texas Gulf Coast, the GCOEM will alert the decision-maker in each jurisdiction and will coordinate and conduct an initial meeting to be chaired by the County Judge approximately 96 hours prior to 39-mph winds reaching the Galveston County coastline. If possible this meeting will be conducted in-person at the GCOEM facility, 1353 FM 646 in League City. The decision-makers will determine times and locations for additional meetings. For storms developing in the Gulf, this timeline may shrink considerably.

Confidence in a particular storm's forecast track is likely to be low at H-96 (four days prior to T.S. winds reaching the coast) or even H-72 (three days). However, conditions may require decision-makers to meet as early as H-120 (five days) ahead of landfall for the purpose of procuring transportation assets.

Galveston County and several municipalities in the County have contracted with local school districts to obtain buses for evacuation purposes. The primary school district with this capability is the Clear Creek Independent School District. In the event buses are not available from the state of Texas (for example, when a fast-forming storm does not allow enough lead time), Galveston County may activate its bus transportation plan with CCISD. Copies of the CCISD bus agreement are available from GCOEM.

Each jurisdiction retains the right to order, or not to order, a mandatory evacuation. Jurisdictions have the responsibility to communicate, cooperate and keep other jurisdictions informed of all decisions that may affect other geographic areas.

When an evacuation order is made, the public information officers of the County and Cities will use all available means to alert the public. For traffic safety reasons, evening evacuations will be avoided if possible.

Prior to the call for evacuation, decision-makers will request implementation by the Texas Department of Public Safety of the District Sub-2A Traffic Management Plan. The Plan includes traffic control assignments for local jurisdictions, which must be familiar with these assignments and related responsibilities.

Evacuation assistance and rescues will cease when weather conditions pose a risk to first responders.

Coordination with the MACC/MACG on all evacuation decisions will occur according to the procedures spelled out in Attachment B. GCOEM will work with surrounding counties to emphasize the need for Galveston County's coastal residents to evacuate in advance of inland areas.

Evacuation activities will be conducted pursuant to the National Incident Management System (NIMS) and the National Response Framework (NRF). Evacuation operations will include work in an Incident Command System (ICS) environment.

VII. CONFERENCE CALL SCHEDULE

In general, and when time does not allow for face-to-face meetings, the Galveston County Cooperative Emergency Management Group (County Judge,

Mayors, Emergency Management Coordinators and other essential decision-makers) will coordinate evacuation activities via regular conference calls.

Experience has shown that it is helpful to have the latest weather information prior to conducting a Local Call. Therefore the decision-makers will first participate in the National Weather Service's call with its 23-county area; or will arrange a call with the NWS exclusive to Galveston County.

The County will then conduct a call with local jurisdictions, and if there are any unmet needs, these needs will be discussed at a subsequent call with the State Operations Center.

Conference calls typically will occur at 10 AM (NWS call); 10:30 AM (Local call) and 11 AM (State call). As a storm approaches and the risk to the Houston-Galveston region increases, the NWS will poll emergency managers or decision-makers if an afternoon call is warranted. If so, the NWS may conduct a 4 PM call, which would be followed by a Local call at 4:30 PM and a State call at 5 PM. Additional calls throughout the evening and early morning hours also may be warranted, especially just prior to landfall.

Often local jurisdictions decide not to participate in the State calls as they may not contain information specific to them or they may have no unmet needs. However, GCOEM will always monitor the State calls and will pass along important information to the County's jurisdictions.

Notice of conference calls will typically come by email or through mass-notification services such as Blackboard Connect. Jurisdictions are responsible for ensuring GCOEM has the latest contact information for conference call participants.

VIII. EVACUATION OF CITIZENS WITH MEDICAL & FUNCTIONAL NEEDS

Hundreds of Galveston County citizens have been identified as having functional or medical needs, and may need assistance evacuating from the path of a potentially devastating hurricane when a mandatory evacuation order has been issued. Hundreds of others may have no functional or medical needs but merely lack transportation.

The State of Texas in April 2011 released a "tool kit" to help communities better plan for the evacuation, sheltering and repatriation of citizens with functional needs. Jurisdictions planning to evacuate residents with functional or medical needs can familiarize themselves with the tool kit posted on the Texas Department of Public Safety/Division of Emergency Management web site.

The County and Cities have knowledge of functional/medical needs individuals who may need assistance evacuating. The State of Texas 2-1-1 Registry assists with registration of these individuals in coastal counties. The state will from time to time forward information on special needs individuals to the County and Cities for their planning purposes; GCOEM also will extract this data and distribute to local jurisdictions regularly.

Despite the best efforts of local officials, it is impossible to determine in advance how many citizens may need assistance with evacuation. The County and Cities will use their best efforts to approximate how many medical or functional needs residents will need evacuation assistance to ensure proper planning prior to the start of Hurricane Season each year. The County will coordinate with the Galveston County Health District regarding citizens with medical needs in the unincorporated areas. Cities should coordinate with their health/medical providers, nursing homes, EMS, etc.

Galveston County and the City of Galveston contract with the City of Austin for shelter space for medical and functional needs individuals. Copies of these agreements are available from the City or the County. Each city in Galveston County has specific responsibilities related to the evacuation of medical/functional needs residents to Austin. Those responsibilities are outlined in Attachment A.

IX. SANTA FE HIGH SCHOOL FIRST-RESPONDER SHELTER

Under an agreement signed by the Santa Fe Independent School District (SFISD), Galveston County and local jurisdictions in 2011, SFISD will allow use of portions of Santa Fe High School and parking lots to house first-responders and store equipment prior to landfall. Galveston County is installing a large generator at the school and will provide meals for first-responders through a separate contract. The school will be vacated as soon as feasible after the storm passes, or when SFISD resumes classes. Signatories to the agreement will not allow the possession or use of drugs or alcohol, or harbor pets, while on school property.

X. RE-ENTRY

Each jurisdiction will decide when it is safe for its evacuees to return, and will coordinate and communicate these efforts with the assistance of GCOEM. When re-entry plans involve return routes that impact multiple jurisdictions, the jurisdictions will use their best efforts to determine a mutually acceptable method for allowing coordinated access to impacted communities along the route, first-responder vehicles, utility company vehicles, and critical businesses. When situations warrant, the County Judge may preside over a Unified Command that jointly makes decisions about command and control, checkpoint locations, staffing and equipment. Impacted jurisdictions will be expected to participate in the Unified Command. One agency may be designated the lead agency at a checkpoint, but

tactical decisions impacting multiple jurisdictions will be made by the Unified Command.

XI. COORDINATION OF LOCAL, REGIONAL & STATE EVACUATION PLANS

Evacuation of functional and medical needs individuals, as well as the general population, requires a coordinated effort by local, regional and state officials. Emergency management officials will use their best efforts to follow the evacuation procedures spelled out in Attachment A.

X. ATTACHMENTS

Attachment A: Evacuation of Medical/Functional Needs Residents

Attachment B: Coordination with the MACC/MACG

Attachment C: Zip Code Evacuation Map

ATTACHMENT A

PROCEDURES FOR EVACUATION OF MEDICAL/FUNCTIONAL NEEDS POPULATIONS

Galveston County is home to many residents who cannot self-evacuate. These individuals who for medical, financial or other reasons cannot evacuate on their own are described by the State of Texas as medical or functional needs residents.

Hurricanes Katrina and Rita in 2005 revealed the critical need for local communities to identify and assist functional/medical needs residents with evacuation when a Category 4 or 5 storm approaches. Local emergency managers have developed the following procedures to help ensure a safe and effective evacuation of transportation-dependent individuals from Galveston County when the next major storm threatens.

IDENTIFICATION OF MEDICAL/FUNCTIONAL NEEDS RESIDENTS

Each community in Galveston County is responsible for maintaining a list of medical/functional-needs residents. Each City will follow its own procedures for development and maintenance of a data base, and for contacting residents in the event a catastrophic storm approaches.

The State of Texas 2-1-1 Registry offers Texans an opportunity to register in advance for medical/functional-needs assistance. Local jurisdictions receive this confidential data via email and are responsible for adding this information to their databases. Inclusion in the data base is not a promise of transportation. The State data-entry process will typically shut down approximately 24 hours prior to landfall, with calls then routed to 911.

NOTIFICATION OF MEDICAL/FUNCTIONAL NEEDS RESIDENTS

Galveston County and each City within the County will strive to notify their medical/functional-needs citizens of the urgency to evacuate from an approaching hurricane. All means of communication will be used to contact those who have no personal transportation. This includes local media, various mass-notification phone and email systems, Internet and cell phone alerts, and other technologies.

Citizens who need transportation out of Galveston County will be advised to go to a pickup point in their community, or directly to one of the two evacuation (departure) points in the County. Each City will be responsible for transporting evacuees from the pickup points in their community to the evacuation points.

In many cases, citizens will have no means of transport to their pickup point or evacuation point. The Cities and County will use their own transportation resources (cars, buses, vans, etc.) and personnel (police, fire, etc.) to transport these individuals to the appropriate locations.

Each City and the County will advise residents of luggage restrictions and pet requirements in accordance with their established procedures. It is the policy of

Galveston County and its cities to accommodate service animals as well as family pets. However each City and the County reserve the right to deny passage for animals that are not restrained and/or deemed a threat to evacuees.

PUBLIC ASSEMBLY POINTS (FOR TRANSPORT TO EMBARKATION HUBS)

The following pickup points have been designated for individuals who need transportation out of Galveston County when a mandatory evacuation is imminent. The Cities and County may revise or eliminate these locations based on circumstances at the time of evacuation.

Cities will be responsible for transporting mainland residents from city pickup points to the Doyle Center in Texas City. Island residents will be directed to use Island Transit to reach the Island Community Center in Galveston. The Galveston County Parks & Senior Services Department will assist with pickup of citizens at unincorporated county pickup points. Bolivar residents will be taken to the Island Community Center; mainland residents will be taken to the Doyle Center.

Bayou Vista/Freddiesville,
Hitchcock: Hitchcock Public Library, 8005 Barry Ave.

Bolivar Peninsula: Crystal Beach County Annex, 946 Noble
Carl Road, Crystal Beach

Clear Lake Shores, Kemah,
League City: Johnnie Arolfo Civic Center, 300 W. Walker
St., League City

Dickinson: McAdams Junior High School, 4007 Video
St., Dickinson

Dickinson (unincorporated): Dickinson Community Center, 2714 Hwy. 3,
Dickinson

Friendswood: Friendswood Library, 416 S. Friendswood
Drive, Friendswood

Galveston, Jamaica Beach: Island Community Center, 4700 Broadway
Ave., Galveston

San Leon-Bacliff: Bacliff Community Center, 4500 10th St.,
Bacliff

Santa Fe: Santa Fe Junior High School, 4200 Warpath
Ave., Santa Fe

Texas City, La Marque, Tiki Island: Doyle Convention Center, 2010 5th Ave. N., Texas City

EMBARKATION HUBS

The Cities and the County will transport citizens from the **pickup points** above to one of two **embarkation hubs**: the Island Community Center, 4700 Broadway in Galveston; or the Charles T. Doyle Convention Center, 2010 5th Ave. N. in Texas City.

Citizens will be encouraged to go directly to the evacuation points, but in many cases that will not be possible for those with no means of transportation, medical issues, etc. These individuals will be transported by any and all available means: public bus (Galveston Island only), police patrol car, Constable or Sheriff's deputy vehicle, senior citizen bus, friends and relatives, etc. In some cases, Connect Transportation may be able to assist as well.

The embarkation hubs will be the only two official departure points for medical-needs evacuees from Galveston County. Citizens who need a ride from Galveston County to a safe location inland must be on a bus at one of the two embarkation hubs by the designated departure times.

MEDICAL TRIAGE AT EMBARKATION POINTS

Triage at the embarkation points will be provided by a team deployed by the Texas Department of State Health Services. Individuals who present at the Island Community Center or Doyle Center with major medical issues will be transported to a state medical shelter in San Antonio. Individuals who board a bus to Austin and develop medical problems en route will be directed to a medical shelter in Austin.

TRANSPORTATION ASSETS

Buses for use in evacuating medical-needs residents may come from one or more sources: the State of Texas; Clear Creek Independent School District; Galveston Independent School District; Texas City Independent School District; Houston Metro; and other providers.

Galveston County anticipates it may need as many as 200 buses from local and State resources for this purpose.

The Texas Division of Emergency Management's timeline for beginning procurement of buses is approximately 120 hours (five days). Confidence in National Weather Service forecasts beyond 72 hours (three days) is low, however, and it will be difficult for local officials to make decisions about evacuation beyond the three-day forecast.

Accordingly, Galveston County and the 13 incorporated cities have entered an agreement with Clear Creek ISD to provide up to 125 buses for evacuation of medical-needs citizens should weather conditions dictate a shortened event timeline.

A combination of CCISD, GISD, TCISD and Metro buses ultimately may be used for evacuation. The number of available drivers, maintenance issues, the school calendar and school events, and concurrent disasters all may affect the availability of local and state resources.

BUS DISPATCH TO EMBARKATION HUBS

Galveston County will be responsible for coordinating with the State of Texas to obtain and dispatch buses to the Doyle Convention Center and the Island Community Center. Requests for buses will be made by the Cities to the County, and then submitted per State of Texas guidelines to the MACC and DDC. Should the Houston-Galveston MACC be unable to fulfill a request for resources, the MACC will pass the request through the local Disaster District Committee to the State. The County's RLO may assist with this process.

If the evacuation planning timeline is too short to await State buses, Galveston County will coordinate the procurement of buses from CCISD. Concurrently, Galveston and Texas City officials will activate their contracts for transportation resources from TCISD, GISD, Metro and others.

The County and Cities will contact representatives of their bus providers according to each jurisdiction's established procedures.

EMBARKATION HUB PROCEDURES

Texas City (Doyle Center) and Galveston (Island Community Center) officials, in cooperation with County and State responders, will establish procedures for the safe and orderly identification, triage and departure of medical/functional-needs evacuees and their pets.

Procedures will address traffic ingress and egress; parking of evacuation buses and private vehicles; staging areas for people, pets, luggage and supplies; public safety and security; and coordination with on-scene agencies.

If requested and provided, State resources including members of the Texas Military Forces may assist with loading of supplies and luggage, and check-in of evacuees, including attachment of a wrist-band tracking device on each individual.

Cities and the County must ensure that their citizens arrive at the embarkation hubs on time for check-in, and that they have followed each jurisdiction's guidelines regarding luggage and pets.

Cities and the County may provide water and snacks for their evacuees, as well as an employee or volunteer to accompany each bus to the host shelter community. A medical representative provided by the University of Texas Medical Branch also may ride each bus to monitor the health of the passengers en route and to alert emergency responders in the event a medical emergency arises.

To the extent feasible, pets departing from Texas City will ride on the same buses as their owners. (Separate pet buses have been arranged for evacuees leaving Galveston.) In general, individuals with medical needs will be grouped on the same buses, as will those with no medical needs, no pets, etc.

All buses will be loaded as fully as possible to ensure all resources are utilized to their maximum capability, unless a shortened timeline mandates the buses leave as quickly as possible. Surplus buses will be released for other purposes.

All evacuees will be asked to provide personal contact information to either the Texas Military Forces or local City employees/volunteers, or both, in order to properly track them while en route and after they arrive at their designated shelter. Buses will not depart the embarkation points without an accurate manifest showing all passengers and pets.

Copies of the manifests will be retained by the embarkation hub staff and the driver of each bus. Galveston County will assist the embarkation hub staff with transmitting manifest information to the shelter hub via the Texas evacuee tracking system and/or other means.

ATTACHMENT B

PROCEDURES FOR COORDINATION WITH THE MACC

A Multi-Agency Coordination Committee (MACC) has been established in the Houston-Galveston region to assist jurisdictions with response to large-scale events. Under ICS, MACC organizations come together to help prioritize requests and share valuable resources.

The MACC, also known as the Multi-Agency Coordinating Group, is not part of the on-scene incident command organization and does not develop incident strategy or tactics. However, the MACC is a useful tool for identifying, locating and directing regional resources in the most efficient manner, and/or forwarding requests to the state through the Disaster District Chair.

Gov. Rick Perry, in RP-57, mandated in 2006 the creation of MACC organizations statewide to correspond with Council of Government jurisdictional lines. The Governor also required each COG region to name a single incident commander. The 13-County Houston-Galveston Area Council region elected instead to name a committee of decision-makers. The Houston-Galveston MACC is comprised of representatives from each of the 13 counties, plus the mayors of the City of Houston and the City of Galveston. Each representative also has an alternate.

ACTIVATION OF THE MACC

When an event of regional significance occurs (including the approach of a Category 4-5 hurricane), the MACC will activate according to the procedures of the Unified Area Coordinating Committee, comprised of emergency management coordinators and senior staff in the H-GAC region. Based on anticipated or actual impacts, MACC members may choose not to participate in an activation (for example, counties located to the extreme north or east of an approaching hurricane's impact area may not need to participate).

The MACC is a "virtual" organization whose members participate in conference calls rather than meet face to face. The organization receives administrative support from the staff of H-GAC, where a conference call bridge has been established for this purpose; and from the City of Houston, which has designated the Houston Emergency Center at 5320 North Shepherd as the location for MACC-related manpower to stand up. The HEC also will house the Catastrophic Medical Operations Center or C-MOC, which assists in transporting medical-needs patients by ambulance and locating facilities for their care and treatment.

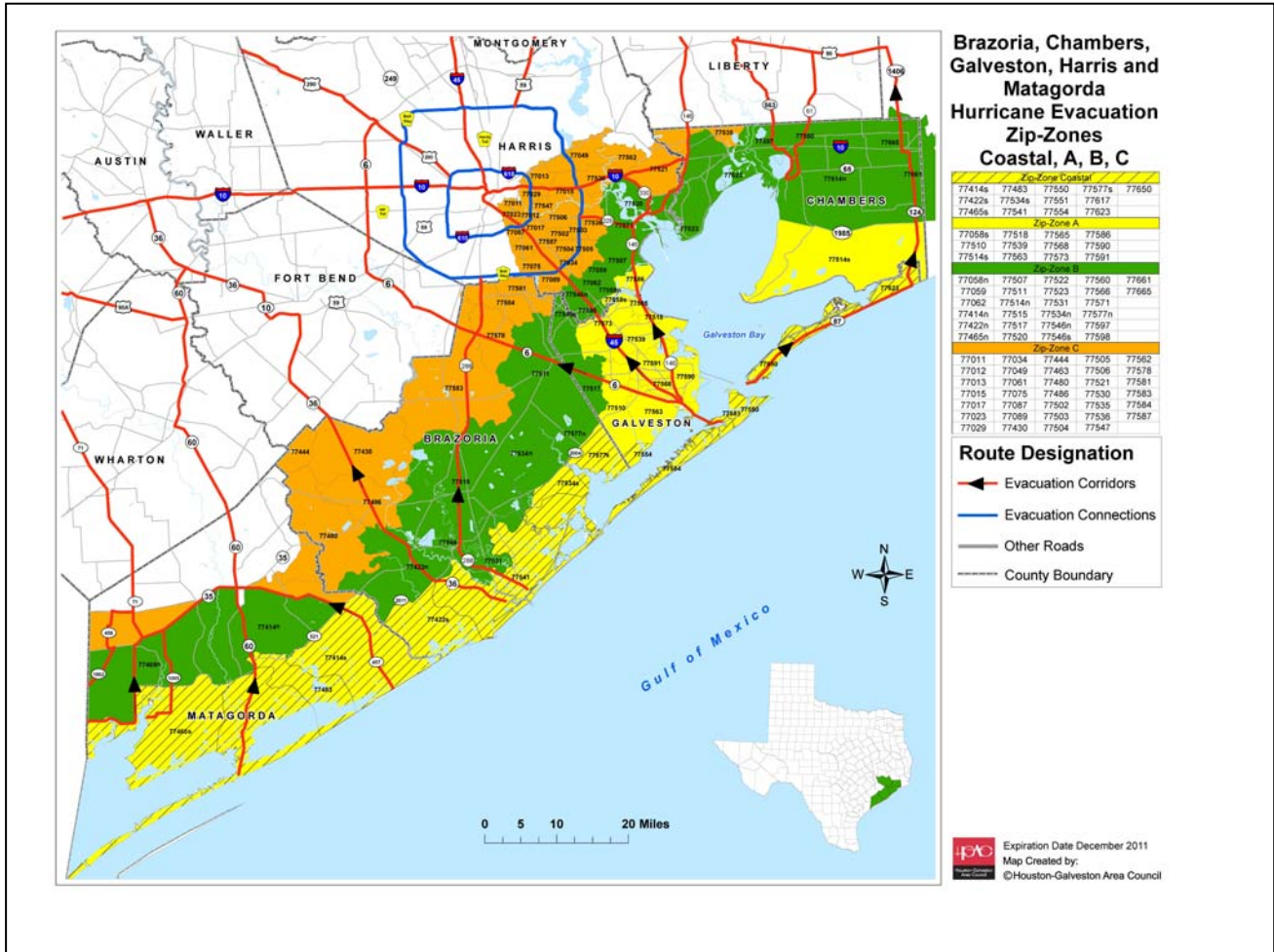
COORDINATION WITH GALVESTON COUNTY

Galveston County has two representatives on the MACC – a representative for the County, and a representative for the City of Galveston. The County's MACC representatives or their alternates will participate in conference calls with the Region when a disaster occurs or is imminent. The MACC will most likely be activated to

discuss evacuation issues and to ensure Galveston County can safely evacuate prior to the mandatory evacuation of surrounding counties.

The MACC organization and staff at H-GAC will be responsible for notifying Galveston County's MACC representatives of conference calls, meetings, etc. MACC conference calls will be conducted after Galveston County jurisdiction conference calls to ensure the latest information is conveyed to the Houston region about local planning efforts.

ATTACHMENT C



The regional Zip Zone Evacuation Map is updated annually by the staff of the Houston-Galveston Area Council and is available for download from their website, www.h-gac.com