

# LAUNCHING SHORENET

DAVID R. BACA, PH.D.  
DIRECTOR

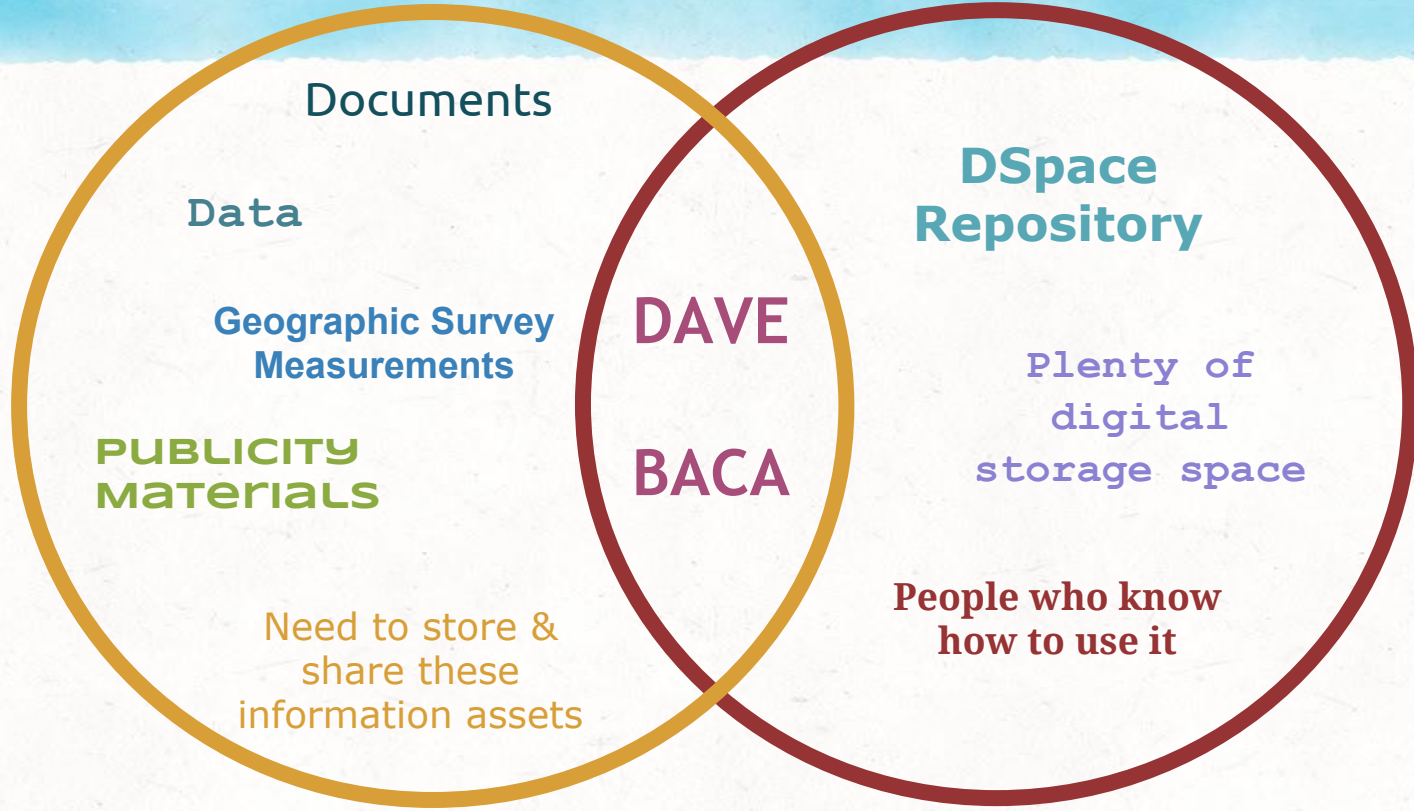
ALEX MITCHELL  
CATALOGER AND ARCHIVIST

LAURA KANE McELFRESH  
DIGITAL INITIATIVES LIBRARIAN

JACK K. WILLIAMS LIBRARY, TEXAS A+M UNIVERSITY AT GALVESTON

2016 TEXAS CONFERENCE ON DIGITAL LIBRARIES  
AUSTIN, TX 2016-05-25

# TAMUG'S JACK K. WILLIAMS LIBRARY



GALVESTON ISLAND PARK BOARD OF TRUSTEES

## *IN THE BEGINNING...*

- ▶ Initial “office dump” of Park Board documents into DSpace
  - Some born digital; others required scanning
  - Some were rejected for copyright reasons
- ▶ Additional boxes received July 2015
- ▶ Began searching online for materials from other locations

# ...THERE WAS THE BEACH MANAGEMENT INFORMATION PORTAL.

Beach Management Inform...

← → ↻ 🔍 <https://repositories.tdl.org/tamug-ir/handle/1969.3/28468>

Apps For quick access, place your bookmarks here on the bookmarks bar. [Import bookmarks now...](#)

## Beach Management Information Portal

### Browse by

- [Issue Date](#)
- [Authors](#)
- [Titles](#)
- [Subjects](#)

Search within this community and its collections:

Go

[Advanced Search](#)

The purpose of the repository is to collect, in one place, digital copies of data and documents that can be of use to beach management entities across the nation, including parks boards, cities, counties, homeowners' associations, private organizations, and others interested in beach management and coastal tourism. The repository provides open access to its contents.

Contributors retain rights to all contributed resources.

### Collections in this community

- [Galveston Island Park Board, March 2014](#)  
Initial set of documents provided by Galveston Island Park Board

### Recent Submissions

#### [West Galveston Island Greenprint for Growth](#)

Unknown author (The Trust for Public Land, 2007-10)

Conservation visioning ("greenprinting") study, commissioned by the City of Galveston, to help identify targets for land conservation and hence to guide future urban development of West Galveston Island land, Recommended ...

### Search the Repository

Go

☒ Search the Repository  
☐ This Collection

[Advanced Search](#)

### Browse

Entire Repository

- [Communities & Collections](#)
- [Issue Date](#)
- [Authors](#)
- [Titles](#)
- [Subjects](#)

This Community

- [Issue Date](#)
- [Authors](#)
- [Titles](#)
- [Subjects](#)

### My Account

[Logout](#)

[Profile](#)

[Submissions](#)

### Context

[Edit Community](#)

[Export Community](#)

[Export Metadata](#)

[Create Collection](#)

[Create Sub-community](#)

### Administrative

4



# ENTRY-LEVEL CUSTOMIZATION: NEW THEMING



## Library Special Collections, Marine and Maritime Collection

BROWSE BY

[By Issue Date](#) [Authors](#) [Titles](#) [Subjects](#)

Search within this community and its collections:

The Jack K. Williams Library offers classic books, unique historical manuscripts, artwork, and artifacts pertaining to the ocean and maritime culture and Texas history.

### News

The Special Collections is open to the public for in-house use between 8 a.m. and 5 p.m., Monday –Friday. Please call or email for an appointment. Phone: 409-740-4560; Email: [LIBRARY@tamug.edu](mailto:LIBRARY@tamug.edu).

### Sub-communities within this community

#### Laffite Society

Publications, artifacts, and conference materials of the Laffite Society

### Collections in this community

#### Laffite Society Collection

Assembled publications and artifacts of the Laffite Society

#### Maps

#### Marine and Maritime Collection

#### Special Collections

Materials that may be collected by one collector, or may be authored by an agency or individual.

#### University Archives Finding Aids

Box and folder list descriptions of collections in University Archives.

### Recent Submissions

Galveston Bay Information Center Maritime Human Factors Database Project Papers, 1994-1996



## GIS EXPERIENCE

- ▶ No GIS experience, Alex attended ESRI's Intro GIS course for two days
- ▶ Crash course in ArcMap and ArcGIS online
- ▶ Discussed the project with instructor and asked for advice

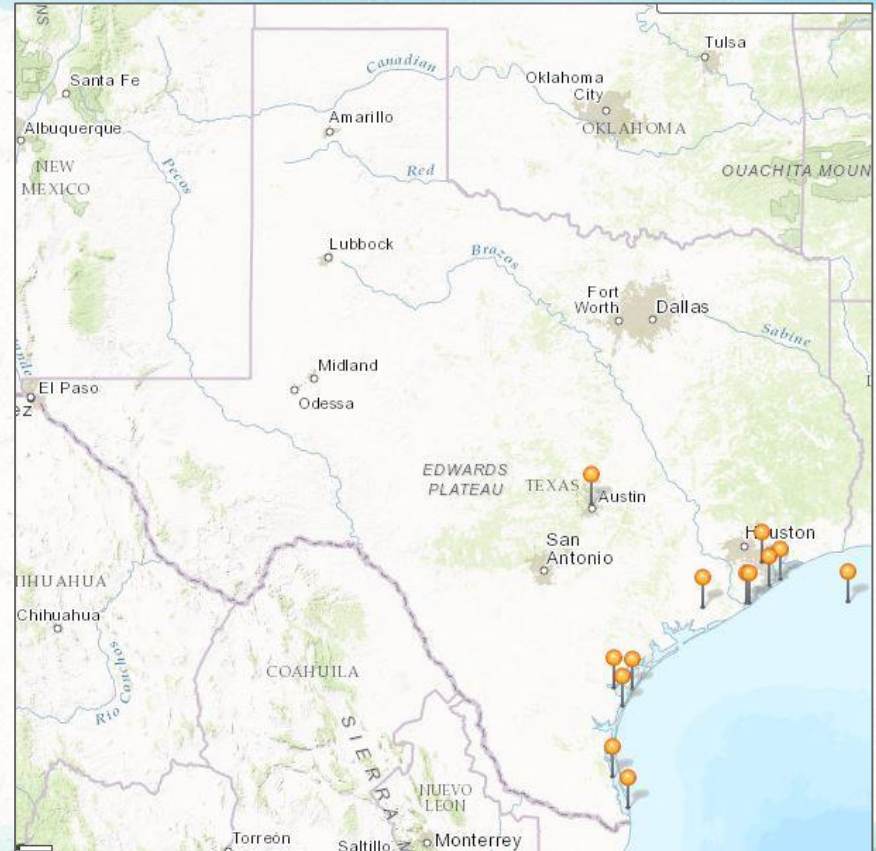
## ADVANTAGES

- ▶ No programming experience, no problem!
- ▶ Created an account for the library
- ▶ Free to non-commercial users
- ▶ 2GB of free storage



# GIS MAP

- ▶ Pins are linked to geographic subject pages in the repository
- ▶ Each city, US state, and country (outside of the US) represented in repository gets a pin





# CREATE A NEW MAP AND CHOOSE A BASEMAP

← → ↺ www.arcgis.com/home/webmap/viewer.html?useExisting=1 ☆ ☰

Apps WorldShare Public catalog ws training Community Center sso ArcSpace | Howdy ebsco Bibz Login phone book Spotify Pandora ArcGIS Online bib formats »

ArcGIS ▾ My Map New Map ▾ TAMUG ▾

Details Add ▾ Basemap Save ▾ Share Print Measure Bookmarks Find address or place 🔍

About Content Legend

### Make your own map

It's easy to make your own map. Just follow these steps:

- 1. Choose an area.**  
Pan and zoom the map to an area or search by its name or address.
- 2. Decide what to show.**  
Choose a Basemap then Add layers on top of it.
- 3. Add more to your map.**  
Add map notes to draw features on the map.  
Display descriptive text, images, and charts for map features in a pop-up.
- 4. Save and share your map.**  
Give your map a name and description then share it with other people.

# ADD A PIN AND CORRESPONDING TITLE AND LINKS

ArcGIS ▾ ShoreNet Documents

New Map Create Presentation TAMU

Details Add ▾ Edit Basemap

Save ▾ Share Print Measure Bookmarks Find address or place

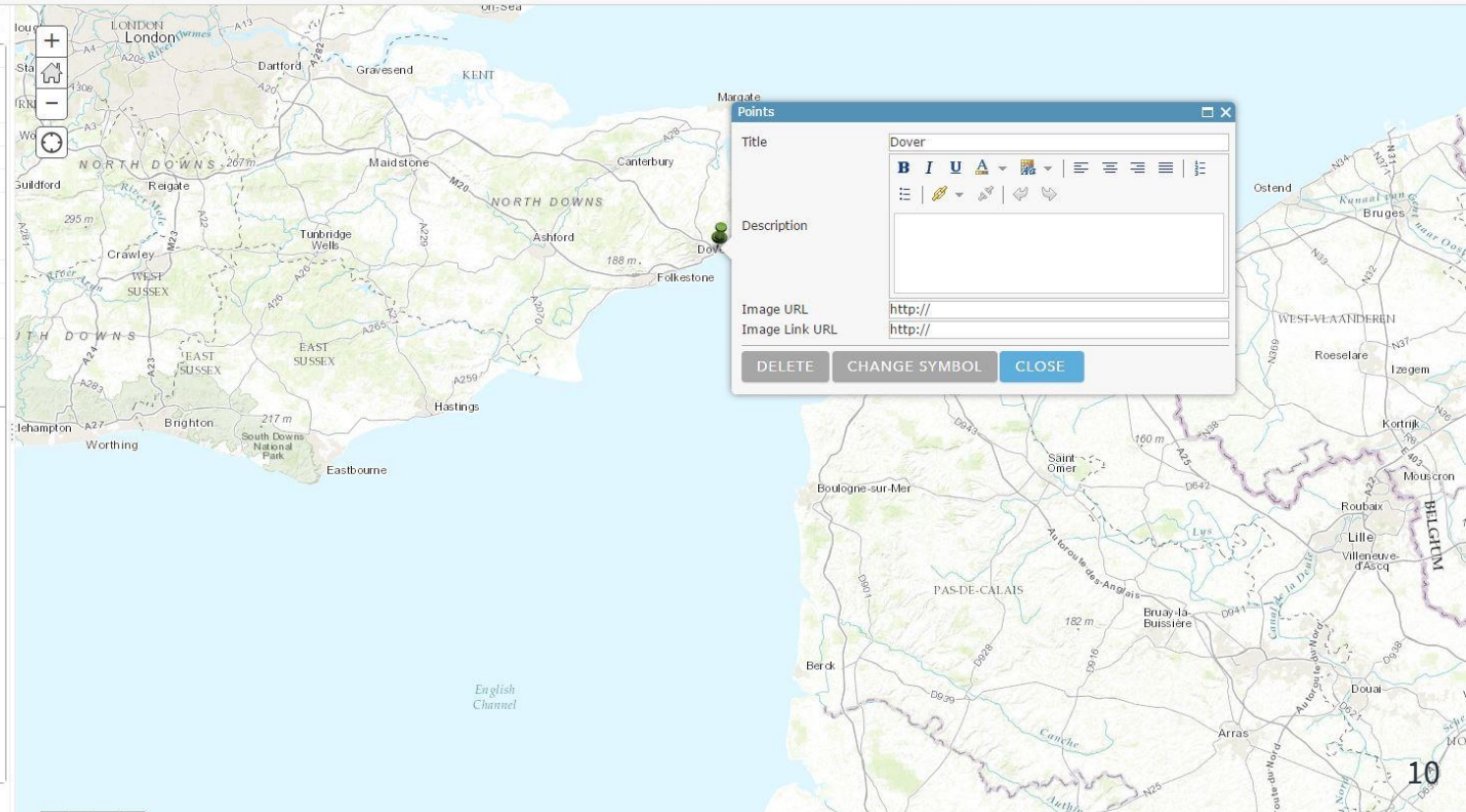
Add Features

**Repository links - Points**  
Stickpin Pushpin Cross

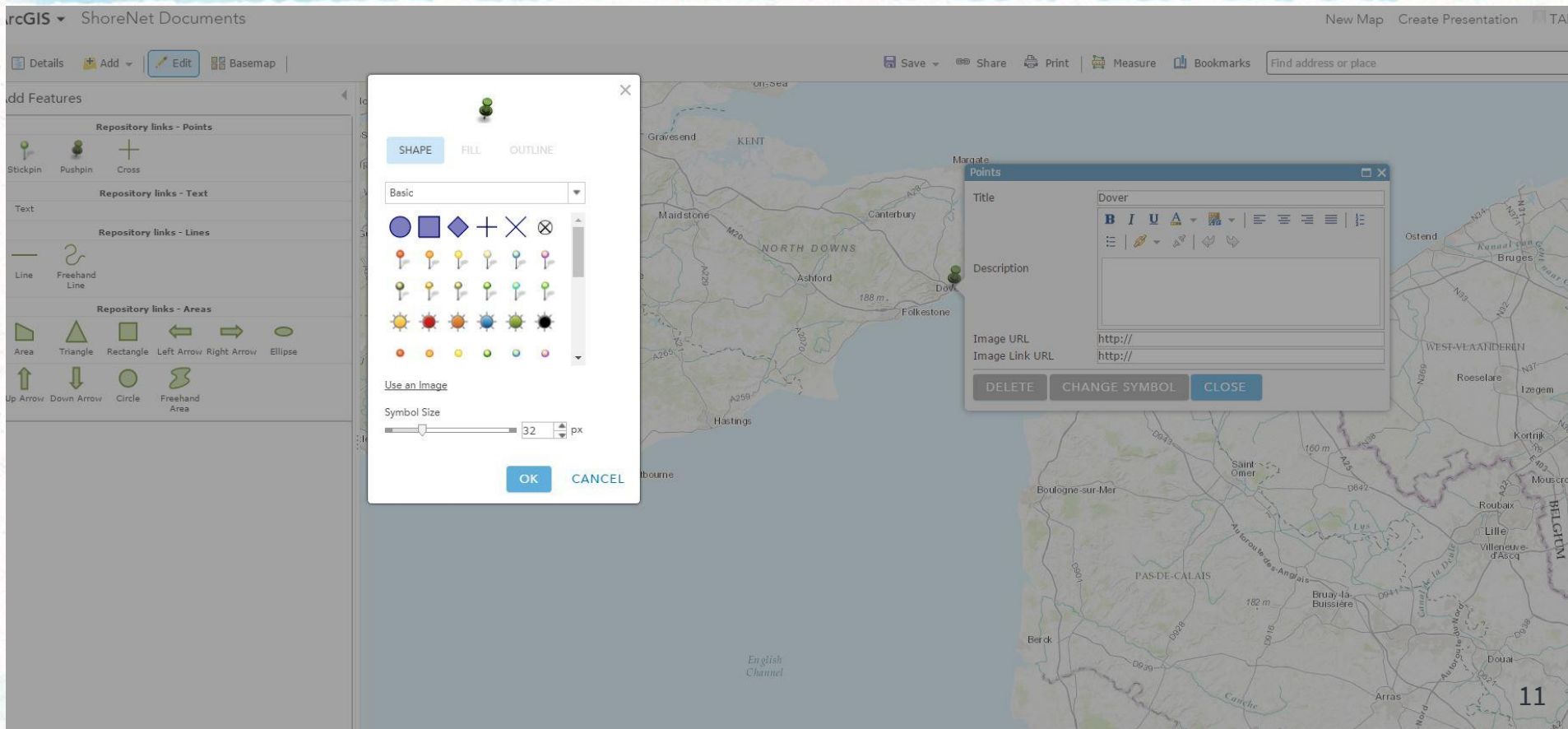
**Repository links - Text**  
Text

**Repository links - Lines**  
Line Freehand Line

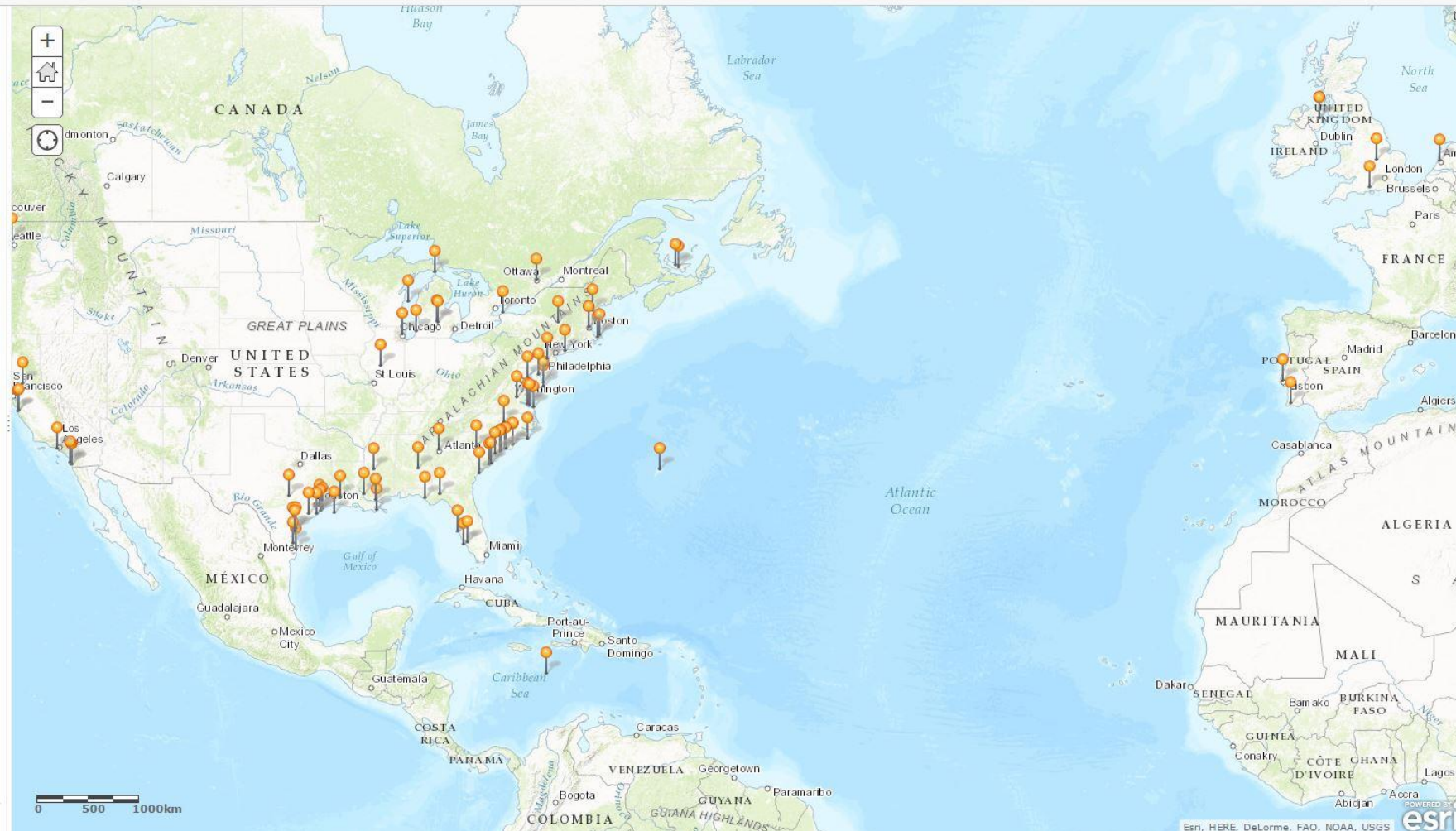
**Repository links - Areas**  
Area Triangle Rectangle Left Arrow Right Arrow Ellipse  
Up Arrow Down Arrow Circle Freehand Area



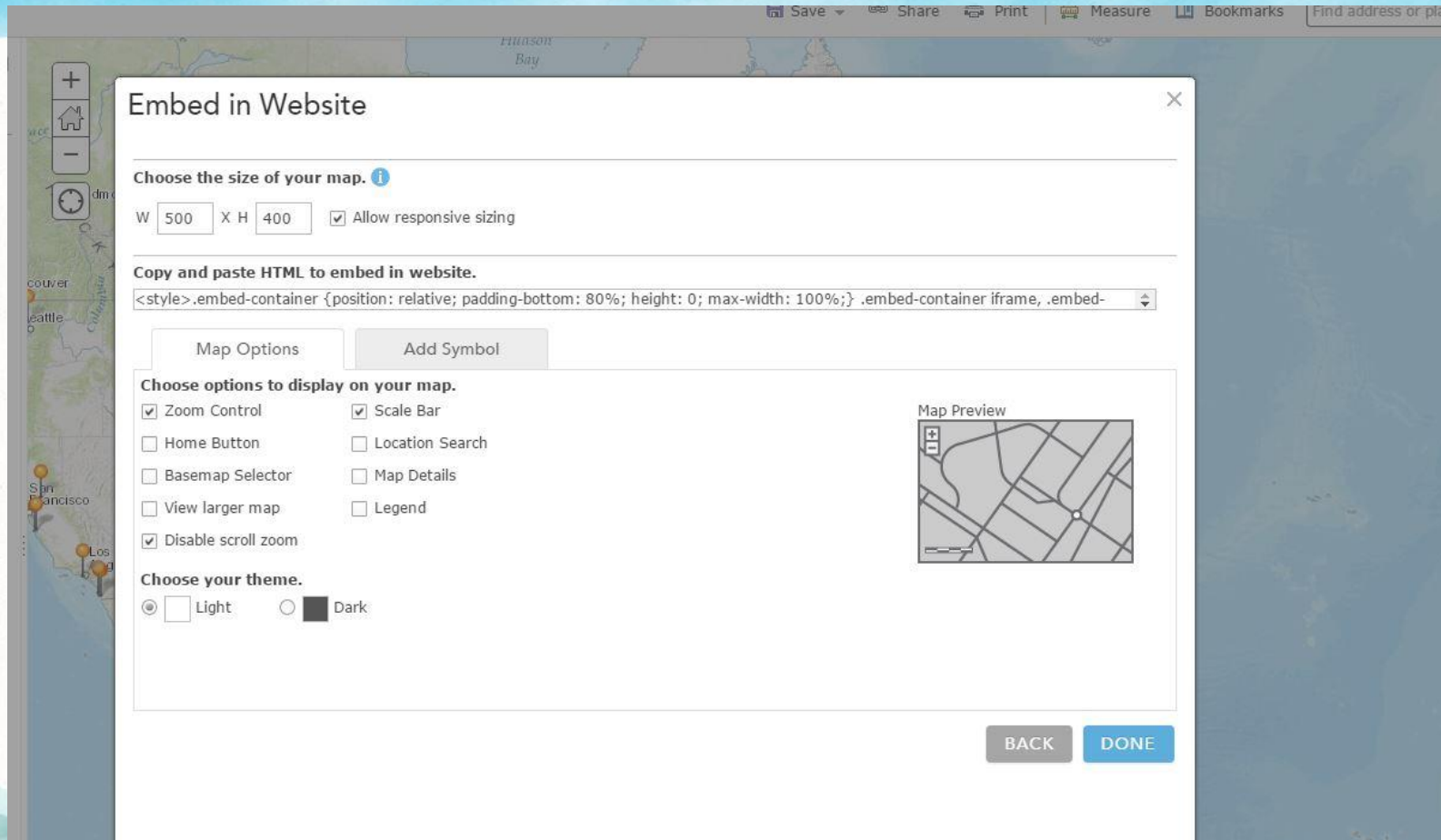
# FORMAT YOUR PIN TO MAKE IT STAND OUT







# GET HTML FOR MAP AND CHOOSE MAP DISPLAY OPTIONS



Save Share Print Measure Bookmarks Find address or place

## Embed in Website

Choose the size of your map. ⓘ

W 500 X H 400 ☒ Allow responsive sizing

Copy and paste HTML to embed in website.

`<style>.embed-container {position: relative; padding-bottom: 80%; height: 0; max-width: 100%;} .embed-container iframe, .embed-`

Map Options Add Symbol

Choose options to display on your map.

<input checked="" type="checkbox"/> Zoom Control	<input checked="" type="checkbox"/> Scale Bar
<input type="checkbox"/> Home Button	<input type="checkbox"/> Location Search
<input type="checkbox"/> Basemap Selector	<input type="checkbox"/> Map Details
<input type="checkbox"/> View larger map	<input type="checkbox"/> Legend
<input checked="" type="checkbox"/> Disable scroll zoom	

Choose your theme.

☒ Light ☐ Dark

Map Preview

BACK DONE

## CHANGES TO THE HTML

### Original:

```
<style>.embed-container {position: relative; padding-  
bottom: 80%; height: 0; max-width: 100%;} .embed-  
container iframe, .embed-container object, .embed-  
container embed, .embed-container video {position: absolute; top: 0; left: 0; width: 100%; height: 100%;} small {position: absolute; z-index: 40; bottom: 0; margin-bottom: -15px;}</style>  
<div class="embed-container"><iframe width="500" height="400" frameborder="0" scrolling="no" marginheight="0" marginwidth="0" title="ShoreNet Documents" src="https://www.arcgis.com/apps/Embed/index.html?webmap=d95424f8aaa24579a7309ded17eb5cc1&extent=-75.1066,38.3199,-75.0606,38.341&zoom=true&scale=true&disable_scroll=true&theme=light"></iframe></div>
```

### Edited:

```
<style>.embed-container {position: relative; padding-  
bottom: 80%; height: 0; max-width: 100%;} .embed-  
container iframe, .embed-container object, .embed-  
container embed, .embed-container video {position: absolute; top: 0; left: 0; width: 100%; height: 100%;} small {position: absolute; z-index: 40; bottom: 0; margin-bottom: -15px;}</style>  
<div class="embed-container"><iframe width="500" height="400" frameborder="0" scrolling="no" marginheight="0" marginwidth="0" title="ShoreNet Documents" src="https://www.arcgis.com/apps/Embed/index.html?webmap=d95424f8aaa24579a7309ded17eb5cc1&extent=-127.2087,20.888,-62.3015,50.3794&home=true&zoom=true&scale=true&search=true&searchextent=true&basemap_gallery=true&disable_scroll=false&theme=light"></iframe></div>
```



# EDUBLOGS OVERLAY

## Harriet Tubman Literary Circle (HTLC)

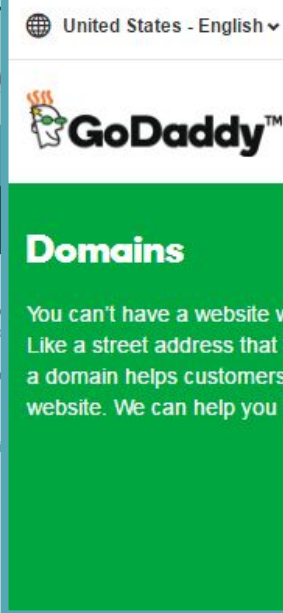


Home About Papers Events

Black Women in National Politics

Taking its name from the antebellum through the underground railroad, the HTLC is an educational clearing house and a place for information, art, narratives and communities and anti-violence.

This gathering site for research

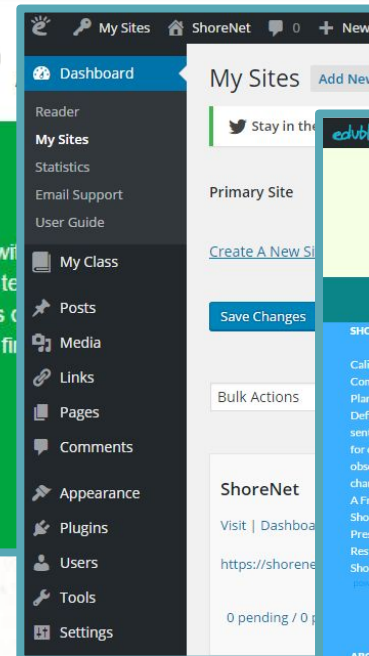


United States - English USD

**GoDaddy™**

**Domains**

You can't have a website without a domain. Like a street address that tells people where to find your website. We can help you find the right domain for your website.



My Sites ShoreNet + New

**Dashboard**

My Sites Add New

Reader

My Sites

Statistics

Email Support

User Guide

My Class

Posts

Media

Links

Pages

Comments

Appearance

Plugins

Users

Tools

Settings

a "website"



edublogs My Sites ShoreNet Customize 0 + New Edit Page Follow Pro Account Howdy, mcelfre!

**SHORENET**

Galveston Island Beach, Shore and Coastal Management Information

TEXAS A&M UNIVERSITY GALVESTON CAMPUS.

SHORENET HOME CONTACT SUBMISSIONS LINKS

**SHORENET'S LATEST:**

California Coastal Commission Strategic Plan 2013-2018

Defining the coast and sentinel ecosystems for coastal observations of global change

A Fresh Look at Shoreland Restoration

Preserving and Restoring Natural Shorelines

**ABOUT SHORENET**

ShoreNet began as a collaboration between the Texas A&M Galveston Library and

**SHORENET HOME**

Browse Beach, Shore and Coastal Management Information [HERE](#) or use the map:

Find address or place

Search ShoreNet: GO

**SHORENET ON FACEBOOK**

ShoreNet 4 likes

ShoreNet shared a link. 59 mins

# WE NEED A LOGO!

Laura's Lego game is strong!



Alex has mad MS Paint skills!

...but in the end  
we went with  
Dave's design,  
despite the lack  
of sharks.



## BUILDING THE OVERLAY

Laura tends to do all of her “coding” via brute force.

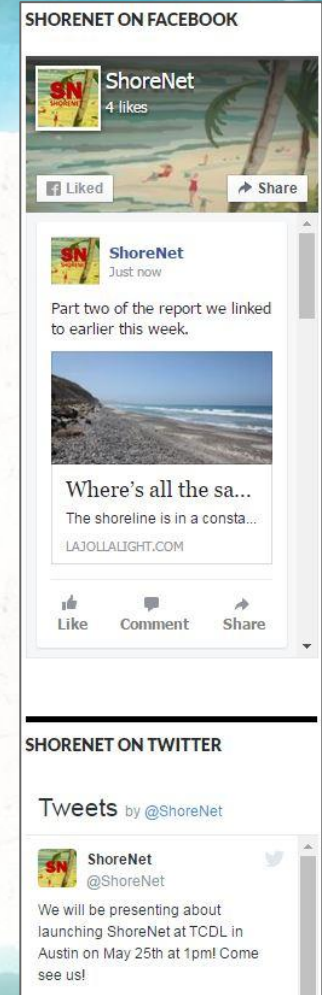


- ▶ Social Media feeds
- ▶ Interactive Map
- ▶ Search Box
- ▶ RSS feed: “ShoreNet’s Latest”



# TWITTER/FACEBOOK

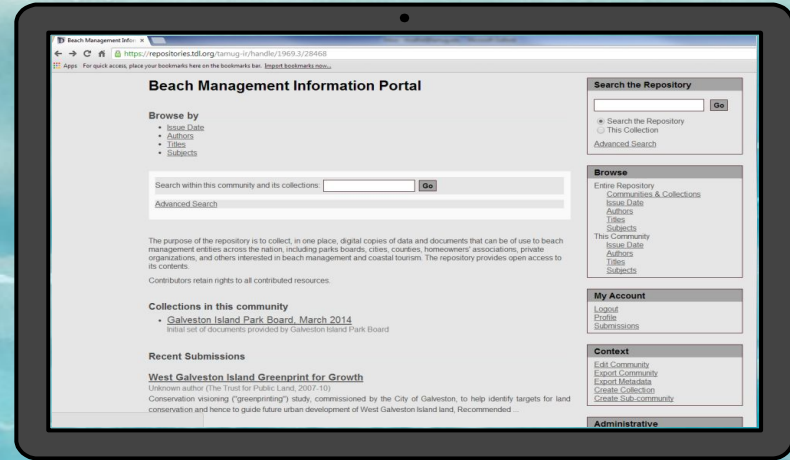
- ▶ Beach management news stories, ShoreNet updates
- ▶ Aggregated & republished on social media by hand
- ▶ Facebook and Twitter no longer provide RSS feeds
- ▶ HTML in text boxes in the sidebar



# BEFORE...

## "BEACH MANAGEMENT INFORMATION PORTAL"

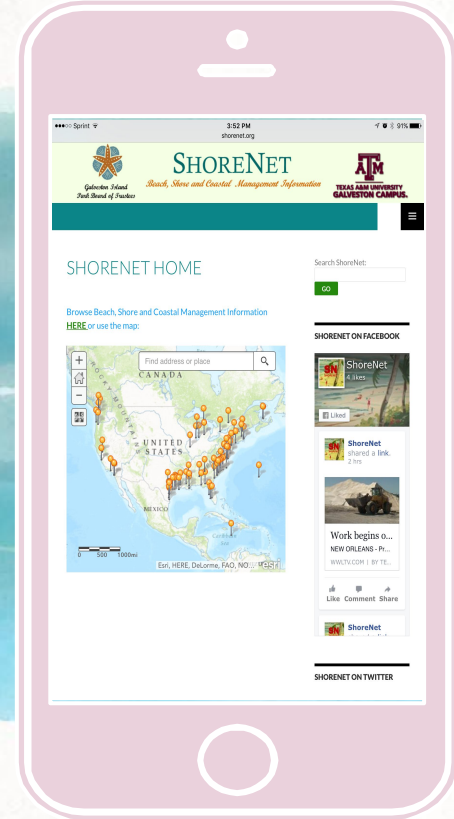
- ▶ Community within TAMUG's Repository
- ▶ DSpace 3.x
- ▶ No frills
- ▶ <https://repositories.tdl.org/tamug-ir/handle/1969.3/28582>



# ...AND AFTER

## SHORENET

- ▶ EduBlogs “Anjirai” theme
- ▶ DSpace 5
- ▶ Mobile-friendly
- ▶ Accessibility-ready
- ▶ shorennet.org





## FUTURE UPDATES

- ▶ Add a controlled vocabulary for geographic locations
- ▶ Recruit additional partners to provide content

# CREDITS

Special thanks to all the people who made and released these awesome resources for free:

- ▶ Presentation template by [SlidesCarnival](#)
- ▶ Photographs by [Unsplash](#)
- ▶ Paper backgrounds by [SubtlePatterns](#)

THANK YOU!



any  
questions  
?

David Baca, Ph.D.  
[bacad@tamug.edu](mailto:bacad@tamug.edu)

Alex Mitchell  
[mitchela@tamug.edu](mailto:mitchela@tamug.edu)

Laura McElfresh  
[mcelfrel@tamug.edu](mailto:mcelfrel@tamug.edu)  
[@lkmcelfresh\\_](#)

For slides, handout, and code, see <http://tinyurl.com/TCDL2016-AJM-LKM>